

## Database Project Milestone #2- 50 points

### THE ER DIAGRAM and SCHEMA

Using MySQL Workbench, create an E-R Diagram that represents the database that *corresponds to your description of the database you proposed in milestone #1*. The E/R diagram should include the following

- At least three entities if you are a two-person group/ At least four entities if you are a three-person group
- the attributes and data types for each of the entities
- Primary and foreign keys denoted
- Relationships established between tables based on your business rules and need to show clearly the maximum and minimum cardinality in both directions for each relationship.

#### What do you need to submit?

One of the team members from each group will submit a word document with 4 pages

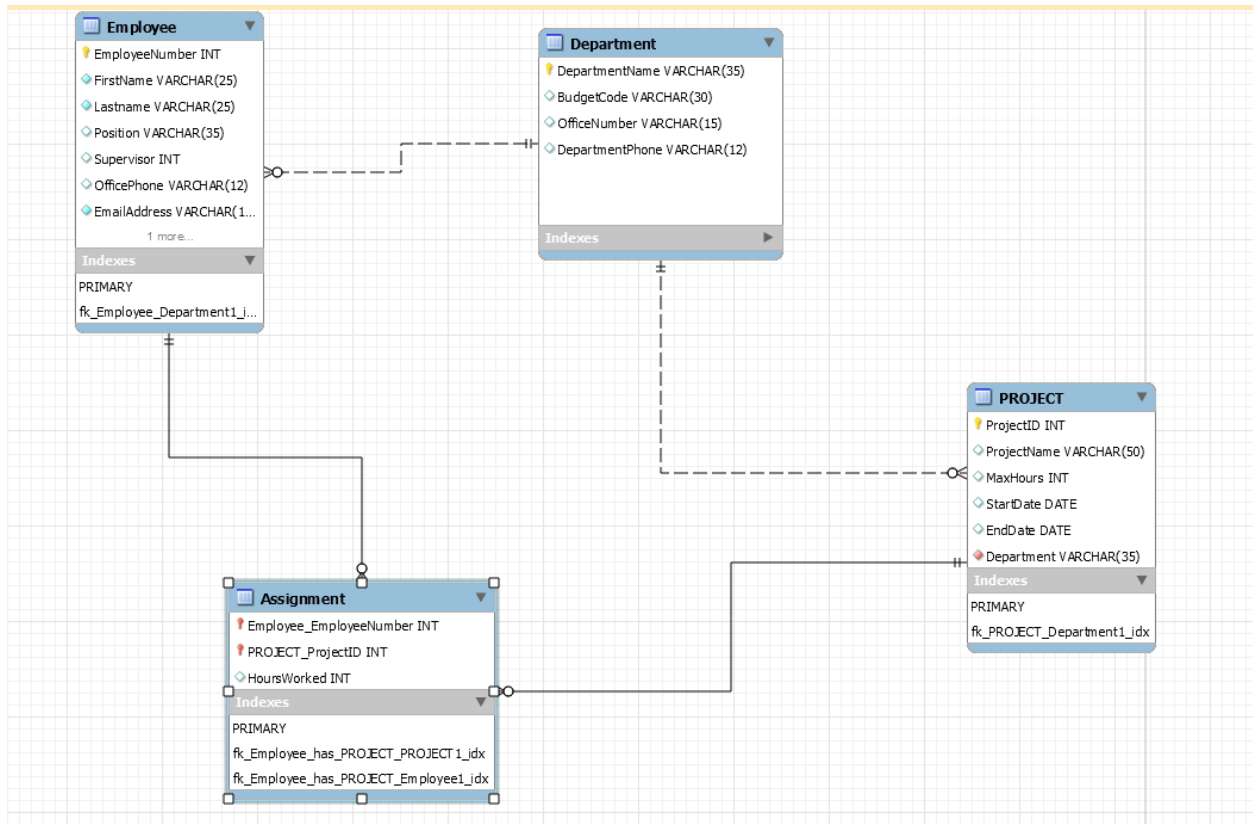
Page #1- Title page that indicates your database project title, and each team member names as it appears in d2l

Page #2- Is a description of your E.R model. Please detail how many entities you have and list each of the entity in bullets and indicate the purpose of each entity. *Example- Employee entity is going to keep track of the employees in our business.* You then need to explain which of the entities are related together and interpret the maximum and minimum cardinality. The description needs to match with your E.R model. *Example, we have related the Employee entity and Department entity because we need to keep track of employees by their department. Also, our business rule is that an employee can belong to only one department but a department can have many employees (Maximum cardinality). Also, an employee needs to belong to a department and a department needs to have an employee (Minimum Cardinality).*

Page #3- Will be a clear screen shot, note that cardinalities need to be visible clearly, the entities and attributes also need to be clear in the screen shot. The E.R model diagram should match with the description provided in Page 2.

Page # 4 will include a brief description of how you and your team member communicated and worked on this part virtually and also list the tasks that each team member completed. It is important for all team members to equally contribute to receive the same grade on the project. If all team members worked equally, you can state that each team member worked equally on the project.

Example screen shot of E.R model from MySQL Workbench. Note that the cardinalities are clear and visible. Also, the attributes, data types and relationships are clear. Also ensure to expand the indexes. You do not need to worry about the solid versus dashed line.



The project will be graded based on the following rubric

|   |           |
|---|-----------|
| Includes all required pages   | 10 points |
| Description of E.R model is detailed, entities, relationships and cardinalities are explained clearly and they match with the E.R model | 20 points |
| The E.R model diagram screen shot from MySql workbench is clear and shows all required parts  | 20 points |